





MANAGING DIRECTOR
Mark Smith
[Read More](#)



DIRECTOR
Camilla Finlay
[Read More](#)



DIRECTOR
David Finlay
[Read More](#)



DESIGN PRINCIPAL -
RESIDENTIAL
Steven Myhill
[Read More](#)



ARCHITECT
Megan Barratt



ARCHITECTURAL TECHNICIAN
Peter Mays



PRACTICE PA
Emma Parsley



ASSOCIATE
David Spragg



ASSOCIATE
Rachel Hartwell



CONSERVATION ARCHITECT
Andrew Perkins



ARCHITECTURAL ASSISTANT
Marcus Shrobsbree



ARCHITECT
Sarah Mitchell-Dolby



ASSOCIATE
Rob Di Carlo



ARCHITECTURAL ASSISTANT
Caroline Scartezini



ARCHITECTURAL TECHNOLOGIST
George Gardner



ARCHITECT
Jordan Potter



ARCHITECT
Alex Stevens



CONSERVATION PRINCIPAL
Andrew Salter



FINANCE MANAGER
Lisa Curtlin



ARCHITECTURAL ASSISTANT
Rosie Sommerville



Introduction - Who are we?

Clews Architects are an award winning RIBA Chartered Practice with a national portfolio. For more than 30 years we have been building a reputation for specialist expertise and creative, contemporary design within the education sector.

From the preparation of masterplans and strategic reviews, extensive refurbishment and new build projects, to general and specialist teaching areas, performing arts spaces and school sports halls as well as boarding and pastoral care facilities.

Our core belief is collaboration and open communication, and we are passionate about sensitive, cost effective solutions, reflecting the unique context of every site and client.

Throughout the studio and on all projects we deliver creative, hard working and committed professionalism. Our core strength is our ability for directors to maintain their involvement in projects throughout the whole process. We believe that consistency throughout is critical and we know from experience that trust is essential and can only be developed by building long term professional relationships.

Our guarantee is that we commit our team to your project and see it through.



Chartered Practice

PERFORMING ARTS AND DRAMA TEACHING SPACES - CHIPPING CAMPDEN SCHOOL



Contract Value : £3.5m - Traditional Tender + Procurement





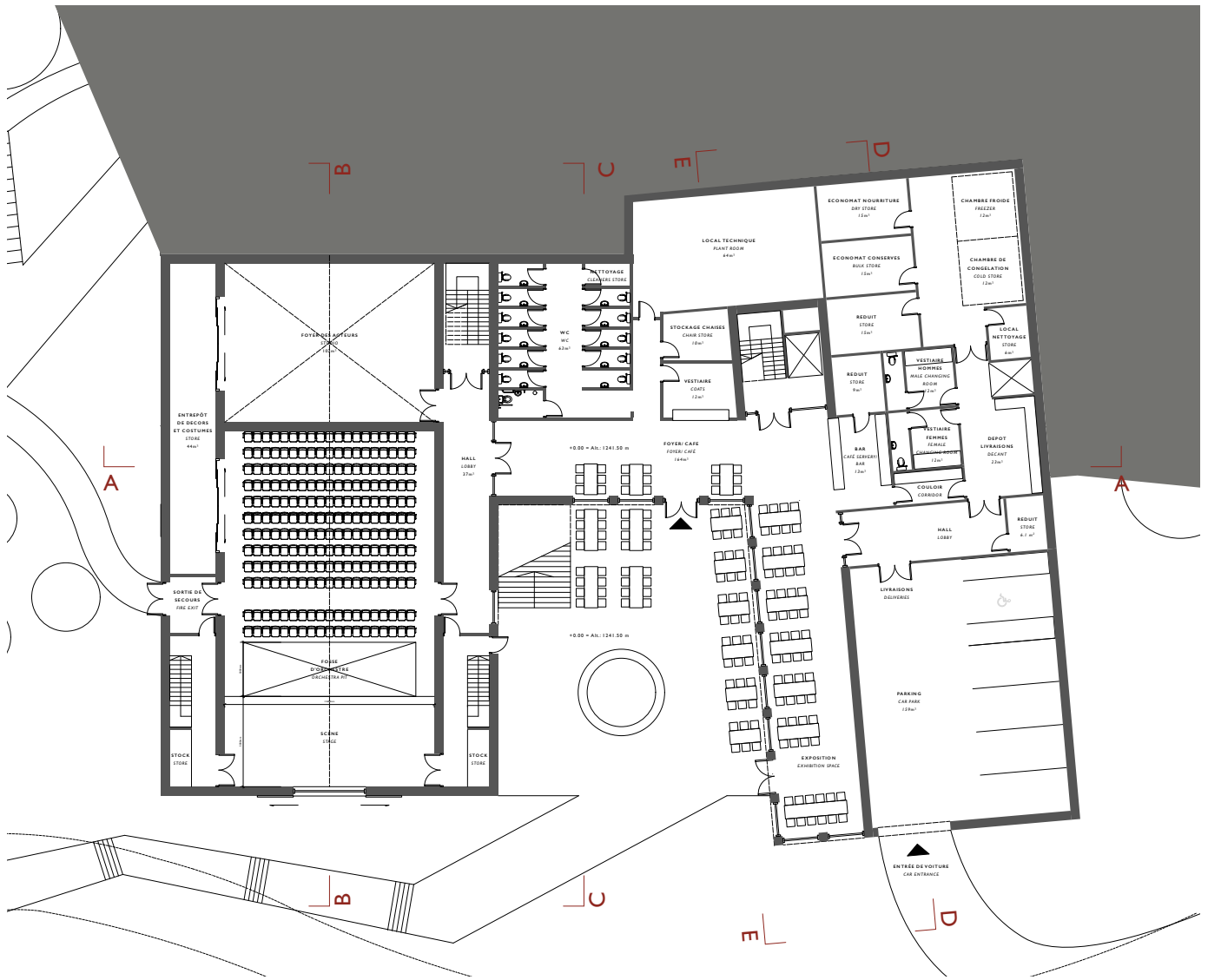


BUILDINGS FOR PERFORMANCE - ASSEMBLY - DINING - AIGLON COLLEGE

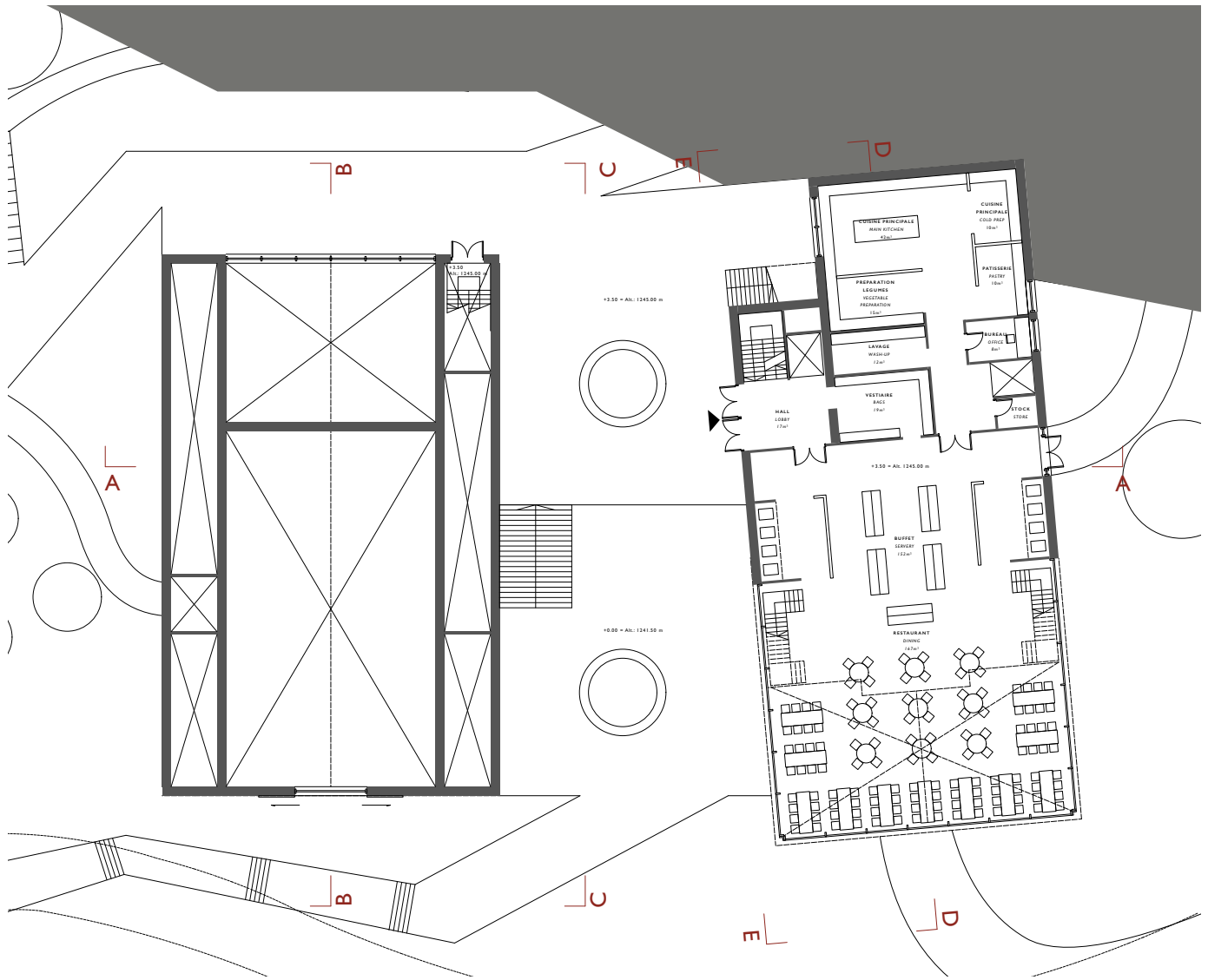


Contract Value £18m - Design + Consultant Architect





Lower Ground Floor Plan



Ground Floor Plan

NEW BOARDING ACCOMMODATION + COACH HOUSE REFURBISHMENT - BLOXHAM SCHOOL

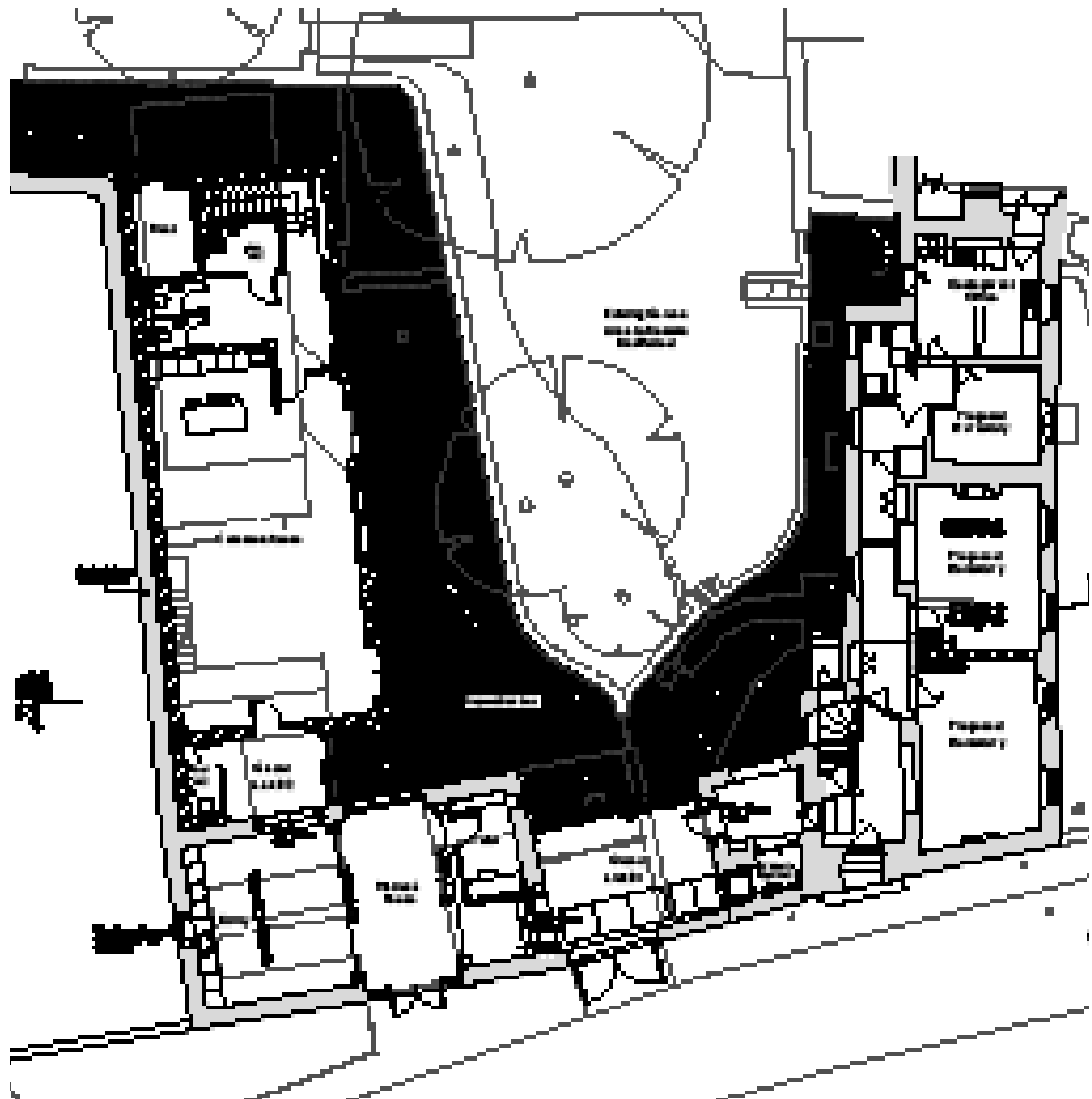


Contract Value £2.5m - Two Stage Tender Procurement





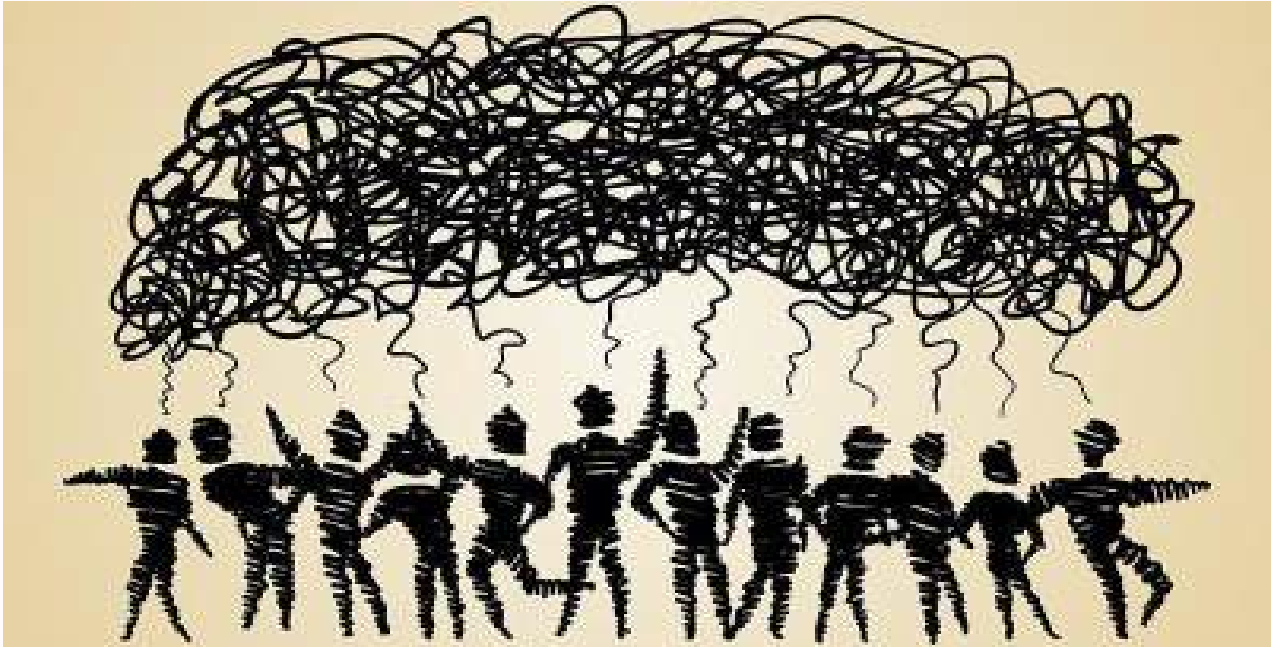




Ground Floor Plan



ESTATE MASTERPLANNING + STRATEGIC REVIEWS



We have a deep understanding of the importance of school masterplanning, in order to facilitate sustainable and controlled growth, that matches both the academic and pastoral need and vision.

We have worked with schools, both nationally and internationally, to help them better understand their site, its constraints and the development potential within it. We provide a phased framework of development that is flexible enough to respond to changing needs but gives a structure on which to build and fund raise.

We recognise the value in existing buildings and propose innovative re-use or adaption where economically achievable but equally recognise that some refurbishments can be cost prohibitive and often still only achieve compromised spaces that become underloved and underused.

Our masterplans are developed through extensive consultation with SLT members, Local Authority Planners and identified stakeholders, through workshops and meetings. It is important that voices are heard but equally we do not believe in simply implementing others "pre-conceived ideas" without thorough review and analysis first, as this is the basis for innovative thought and design.

We work closely with other building consultants to look at infrastructure, services and energy efficiency as these are often overlooked in the early stages, yet can impact heavily on project costs.

Masterplans can become ambitious and expensive documents that try to meet every need and aspiration, school's have to continue to function and remain safe places in which to learn, so our team understand the importance of defining the key elements of development, managing expectations and providing, phased and costed implementation programmes. We are a Practice that wants to realise and deliver its designs and so provide workable solutions.

SENIOR LEADERSHIP / GOVERNING BODY

Academic Need

Vision or Mission Statement

Ethos, Values and Heritage

Future Objectives



SCHOOL DEVELOPMENT PLAN

Feedback / Modification

STAFF & CONSULTANTS - COLLABORATION

Site Overview (uses & zoning)

Condition of Existing Buildings & Infrastructure

Problems in use

Floorspace & Area



SITE & BUILDING APPRAISAL



SITE & PREMISES STRATEGY

POLICY DECISIONS / SOLUTIONS

Repair & Maintenance

Adaption & Refurbishment

New Buildings

Sustainability & Energy Efficiency

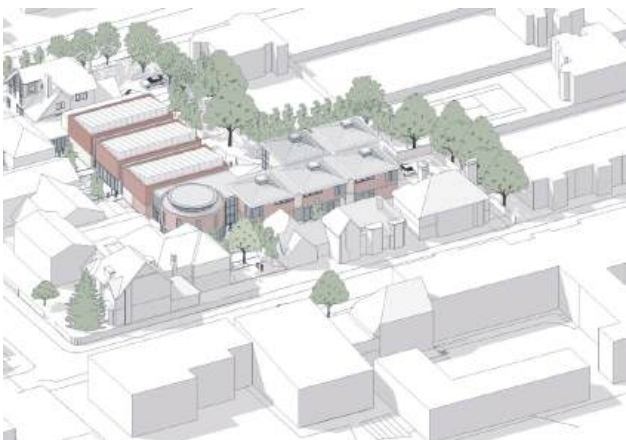
Site Divestment



ART + TECHNOLOGY - PERFORMANCE + MUSIC SPACES - ST ALBANS HIGH SCHOOL FOR GIRLS



Contract Value £4m - Traditional Tender Procurement







MASTERPLANNING - DINING + LIBRARY FACILITIES - TUDOR HALL SCHOOL



Contract Value £4m - Traditional Tender Procurement







CLASSROOM BLOCK DEVELOPMENT - CHENDERIT SECONDARY SCHOOL





MULTI FUNCTION HALL + MUSIC PRACTICE ROOMS - HOLYCROSS PREP SCHOOL



Contract Value £4m Traditional Tender Procurement



SCIENCE BLOCK + EXPRESSIVE ARTS STUDIO - THORNTON COLLEGE





2-FORM ENTRY- C of E PRIMARY SCHOOL - OXFORD DIOCESE BOARD OF EDUCATION



Contract Value £9.5m - SCAPE Framework Procurement





