

LIFE TOUCHING DESIGN

OUR INDEPENDENT SCHOOL EXPERIENCE

LSI ARCHITECTS

WHERE DO WE STAND?

We stand with you. Whoever you are – a client, a colleague, a supplier, someone who lives or works in, or is just passing through, a building we've designed. We stand with you because, for us, architecture is all about people. Get to know them and what's important to them, connect with them and collaborate, deal with them respectfully and with integrity and, together, you can solve any problem, overcome any challenge and achieve any ambition. That's what it takes to create sustainable, innovative, valuable and positive architecture. Architecture that improves lives, builds communities and enhances society.

Life touching design.

ABOUT LSI

LSI Architects is an AJ100, award winning architectural practice with around 70 people, including architects, architectural technologists and support staff, based in London and Norwich.

We seek to create sustainable, innovative, valuable and positive Architecture that improves lives, builds communities and enhances society, or as we put it - Life Touching Design.

The Practice has extensive experience of undertaking projects for clients of all types, from major contractors, commercial and public sector clients throughout the UK, with a particular focus on projects in London, Norfolk, Cambridge and the Eastern Region.

A large percentage of the practice's work comes in the education and healthcare sectors where LSI is recognised as a leading provider of architectural services in the United Kingdom. The practice also operates in the residential, workplace, retail and leisure sectors, and takes on a number of pro-bono community projects for various charitable organisations throughout the year.

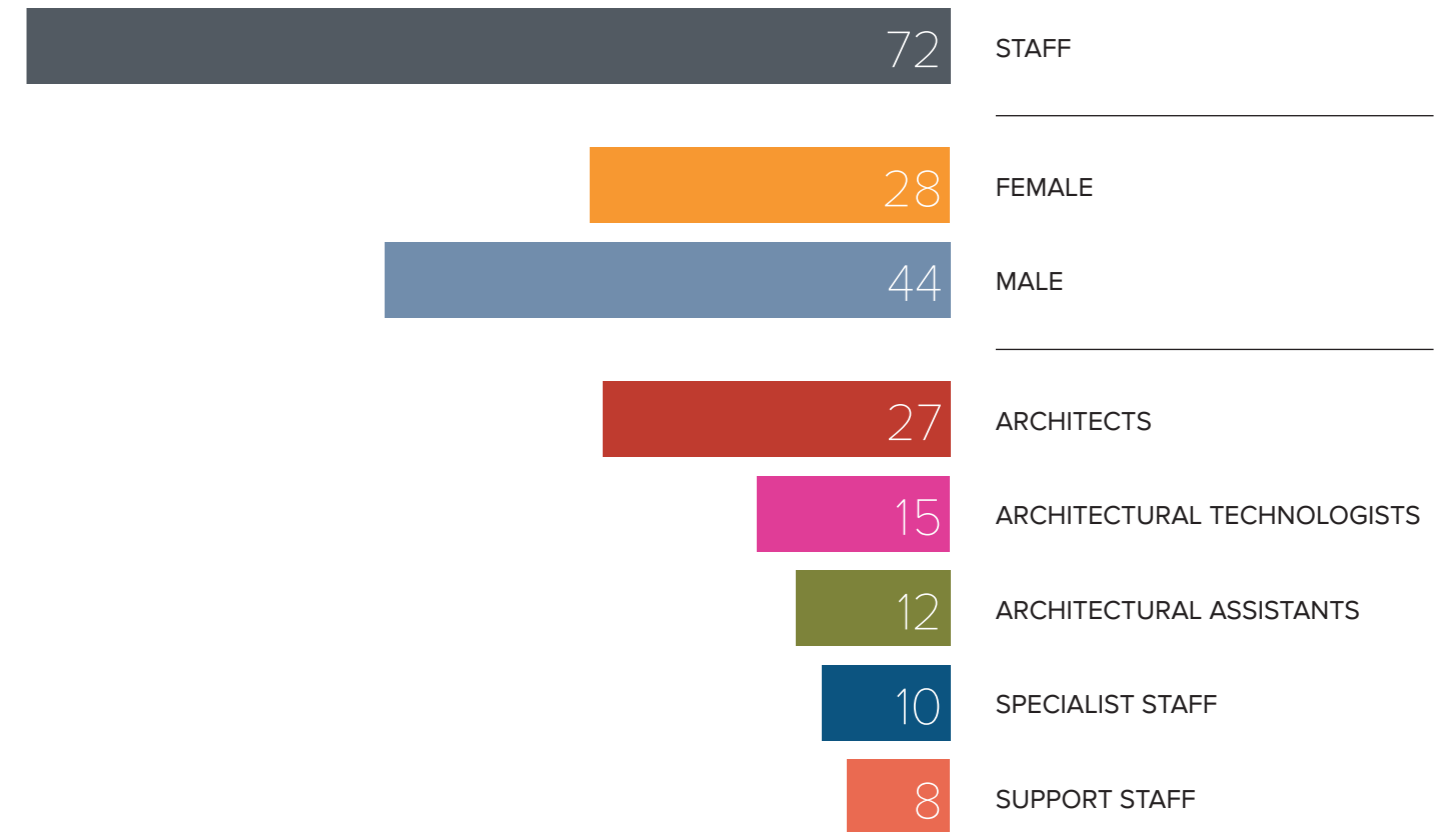
Our clients tell us that they value our professional, collaborative, friendly and creative approach to projects and that our team is great to work with. Our people are happy, highly trained and motivated to deliver the quality design and committed service that we believe our clients should expect. The fact that the majority of our turnover derives from repeat business and framework commissions, is a testament to the quality of our service.



OUR VALUES



OUR PEOPLE



OUR TEAM

DIRECTORS			
DAVID ANDREWS ARCHITECT	PETER COURTNEY ARCHITECT	BEN GOODE FINANCE	MIRJA MAINWARING ARCHITECT
MATTHEW CLARKE ARCHITECTURAL TECHNOLOGIST	PETER DURRANT ARCHITECTURAL TECHNOLOGIST	RUPERT KITCHEN ARCHITECT	JEREMY O'ROURKE ARCHITECT

ASSOCIATES			
LEANNE ACKRELL ARCHITECT	TONY CUSS ARCHITECT	JAMES LAKE BIM MANAGER	DANIEL PEDLEY ARCHITECT
JORDAN ARMSTRONG ARCHITECTURAL TECHNOLOGIST	MARION GUDAT-PRESLEY ARCHITECT	JAMES MACDONALD PRINCIPAL DESIGNER REPRESENTATIVE	ROB RUFFLES ARCHITECT
DAVID BANNISTER ARCHITECT	DEREK JACKSON GRAPHICS & VISUALISATION MANAGER	ADRIAN MOODY ARCHITECT	JULIAN STEEL ARCHITECTURAL TECHNOLOGIST
STEVE COTTON ARCHITECTURAL TECHNOLOGIST	LOUISE KNIGHTS ARCHITECT	KATRINA PARSONS HR MANAGER	BEN WALL ARCHITECT

TECHNICAL STAFF ARCHITECTS		SPECIALISTS		BUSINESS SUPPORT	
DOUGLAS CRAVEN	JAMES LAWRENCE	KARL BROOKS BRAND & MARKETING MANAGER	REBECCA ADAMS LONDON OFFICE COORDINATOR	Laura Belcher ADMIN ASSISTANT/ RECEPTIONIST	SOFIA DODSON ADMIN ASSISTANT
ALEX CROSSLEY	JENNIFER LEE	ADAM BURNS IT MANAGER	LUCY GLEN ADMIN APPRENTICE	JESSICA JACKSON ADMINISTRATION TEAM LEADER	CHLOE JESSETT ADMIN & MARKETING ASSISTANT
LUKE EVANS	JOSEPH MCKIBBEN	DEBBIE CUSHING GRAPHICS ASSISTANT	ALFIE DUNTHORNE TECHNICAL SUPPORT APPRENTICE	MICHAEL WILLIAMS MANAGEMENT ACCOUNTANT	ED WOODHOUSE OPERATIONS COORDINATOR
AMY FORREST	MATTHEW REEVE	JAMES GOODE CAD ASSET DEVELOPER	JAMES GOODE CAD ASSET DEVELOPER	BECKY WATSON ACCOUNTS ASSISTANT	ED WOODHOUSE OPERATIONS COORDINATOR
NADEZDA KAZAKOVA	JENNIE SEARLE	BECKY WATSON ACCOUNTS ASSISTANT	MICHAEL WILLIAMS MANAGEMENT ACCOUNTANT	ED WOODHOUSE OPERATIONS COORDINATOR	ED WOODHOUSE OPERATIONS COORDINATOR
CHRIS LAPPIN		ED WOODHOUSE OPERATIONS COORDINATOR			
ARCHITECTURAL TECHNOLOGISTS					
SAMANTA BERZINA	TRAINEE TECHNOLOGISTS				
OSVALDO DIAS	JAMES COOPER				
DANIEL HOLLOWAY	HENRY DOBSON				
EDWARD O'CONNELL	HARRIET KEY				
DANIEL OWEN					
HAVAN PISHDARY					
DAYLE WHEELER					
ARCHITECTURAL ASSISTANTS					
KATRINA BARRITT-CUNNINGHAM	BLAIR LUTHER-VEITCH				
EMILIA BLYSKAL	DAVID PENNINGTON				
JACOB DOWNEY	AMBER PRUST				
CHLOE GLADDEN	ELLSHA SEAGROATT				
OLIVIA JOHNSTON	JOSHUA TAPLIN				
PATRYK KUBICA	HOLLY WISE				

SELECTION OF RECENT AWARDS & ACCREDITATIONS

2022

BEST COMPANIES TO WORK FOR
100 Best Small Companies to Work For

AJ100 AWARDS
79th in the AJ100

AJ Community Impact Award Finalist - YMCA Jubilee Hall

AJ RETROFIT AWARDS

Health and Community Finalist - YMCA Jubilee Hall

MIND WORKPLACE WELLBEING INDEX
2nd place (of 119 employers)

2021

BEST COMPANIES TO WORK FOR
100 Best Small Companies to Work For (23rd)

AJ100 AWARDS
Employer of the Year - Finalist

MIND WORKPLACE WELLBEING INDEX
Top Employer

IHEEM HEALTHCARE ESTATES AWARDS

Architectural Practice of the Year – Finalist
New build project of the year – Finalist, Fair Havens Hospice

2020

SUNDAY TIMES
100 Best Small Companies to Work For (60th)

AT AWARD
Award for Excellence in Architectural Technology - Highly Commended (NCFC Academy) RICS EAST OF ENGLAND

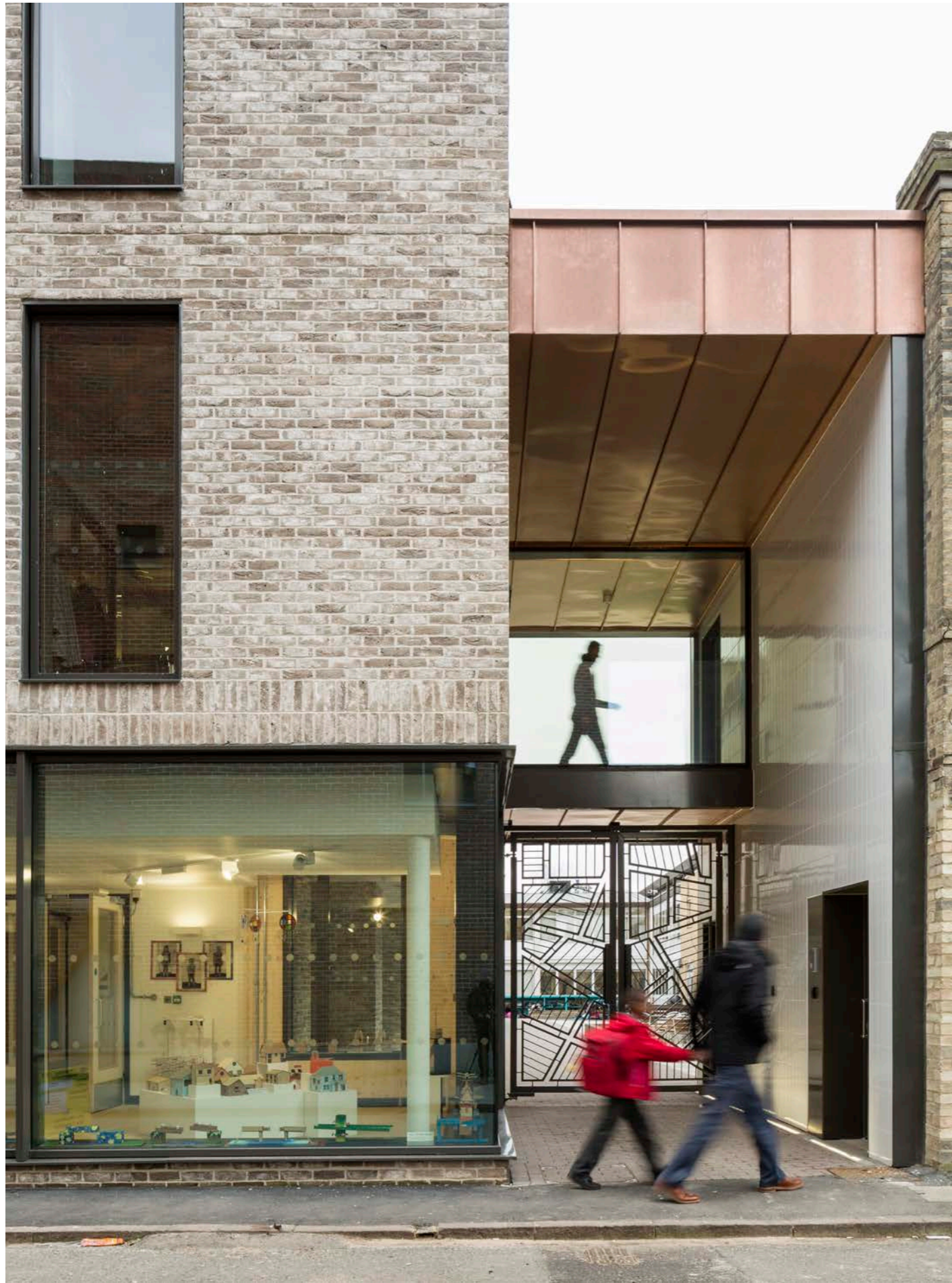
AWARDS

Social Impact Award - Shortlisted (NCFC Academy)

MIND WORKPLACE WELLBEING INDEX
Gold - Achieving Excellence

Refer to our website for a full list of awards.





INDEPENDENT SCHOOL PROJECTS



THE BRITTEN BUILDING, GRESHAM'S SCHOOL, HOLT

Client: Gresham's School | Value: £3.25M | Date: 2017



The two-storey Gresham's School Britten Building development includes classrooms, music practice rooms, a recording studio, a 140 seat auditorium that can be used as a Sixth Form lecture theatre as well as performing space, cafeteria and social spaces for pupils.

The massing and scale of the new building offers the school significant facilities whilst maintaining a close relationship to the surrounding buildings. The main materials for the external cladding are mixed-red brick and timber, creating a contemporary feel that is also in keeping with the surroundings.

The new building improves the visual connections through to the nearby Auden theatre, whilst offering a new courtyard and processional route to the buildings from the south, via a brick colonnade. All internal spaces are arranged to provide good levels of natural light, pleasant views as well as serving a constant reminder of the buildings purpose and essence.

Components, materials and construction detailing – that make up the building fabric – combine to minimise the energy requirements for the building to achieve lower running costs, reduced maintenance requirements and optimise lifecycle costs. The building was strategically built on an existing brown field site, and takes maximum advantage of sunlight, using PV panels and maximising natural daylight.

“

THIS IS THE MOST FLEXIBLE MUSIC RECITAL ROOM THAT I HAVE EVER WORKED IN, AND THE PRACTICE AND TEACHING ROOMS ARE THE BEST OUT OF ANY SCHOOL OR MUSIC CONSERVATOIRE THAT I KNOW.

William Coleman, Head of Academic Music at Gresham's School

“

AN OUTSTANDING BUILDING THAT OPENS UP AND REINFORCES ROUTES THROUGH THE CAMPUS. THE CONSTRUCTION QUALITY IS VERY IMPRESSIVE AND LOOKS FAR MORE EXPANSIVE THAN THE £3.25 MILLION BUDGET. IT IS CLEAR THAT THE BRIEF WAS WELL INTERPRETED.

Norfolk Association of Architects

”

”

RELATED PEOPLE



RUPERT KITCHEN
DIRECTOR



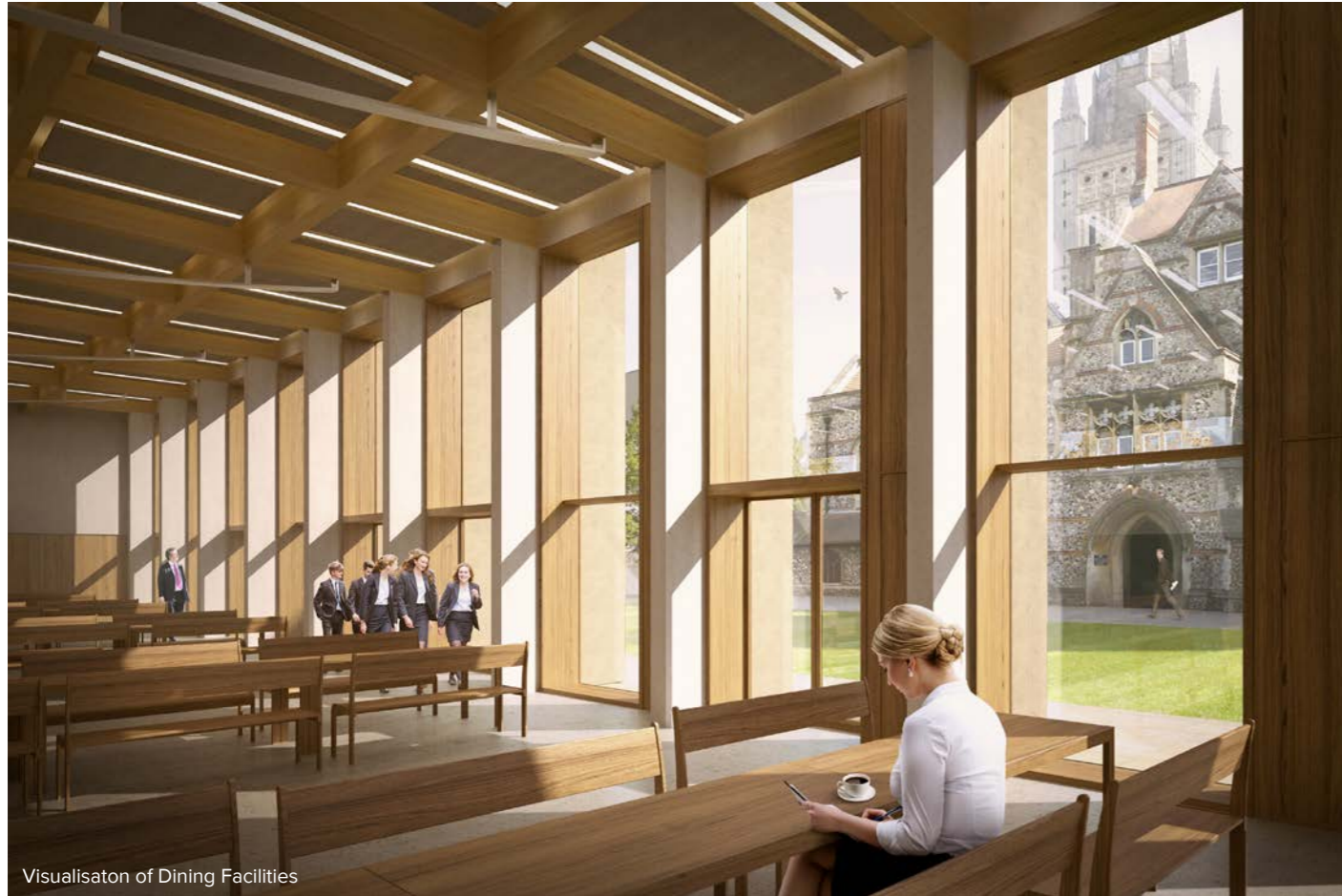
DANIEL PEDLEY
ASSOCIATE



MATT REEVE
ARCHITECT

PALACE LAWN, NORWICH SCHOOL

Client: Norwich School | Value: Confidential | Date: Current



Set within the historic Precinct of Norwich Cathedral, Palace Lawn provides new Teaching facilities and improved Dining provision adjacent to the Bishop's Palace and numerous other Listed structures Scheduled Monuments. The scheme comprises two wings of accommodation accessed from within the Precinct and also aligned to a historic point of access through the precinct wall that is re-opened to provide access directly onto Palace Plain. A new formal lawn completes the setting of the two new buildings and reinstates the formal lawn setting to the Grade I Listed Bishop's Palace that is evident in illustrations of the Bishop's Close that pre-date the late Victorian remodelling. The new buildings respond to the site's heritage context in their scale, arrangement, form and material finishes while promoting a contemporary appearance - deliberately 'of their time' as a counterpoint to the site's historic structures.

The scheme comprises new teaching space and a large volume dining hall with full service kitchen and stores. The school will also open the facilities for use by the wider community as an event space for plenary sessions, performance and other social ceremonies and events. The internal finishes and furniture solutions are proposed to allow for this flexibility of use along with re-modelled external spaces to benefit the school's use and support further community events during the summer months.

The design and detail of the scheme are being developed in close consultation with Historic England and the Local Authority's Design and Conservation Officer during an extensive pre-application process.

RELATED PEOPLE



RUPERT KITCHEN
DIRECTOR



MATT CLARKE
DIRECTOR



ROB RUFFLES
ASSOCIATE

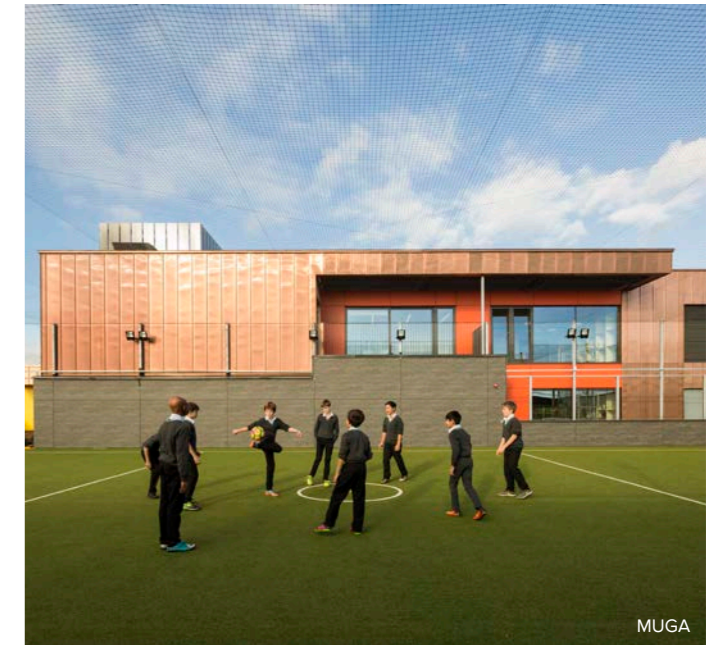


DANIEL OWEN
ARCHITECTURAL TECHNOLOGIST

STEPHEN PERSE FOUNDATION, CAMBRIDGE



Client: Stephen Perse Foundation | Value: £10M | Date: 2017



The Stephen Perse Foundation (SPF) is a group of six schools across five sites in Cambridge, Madingley and Saffron Walden.

The project is based at their Senior School campus in the centre of Cambridge - an inherently complicated island site due to its city centre location and historic context.

The school was admitting girls aged 11 - 16, however they intended to admit boys of the same age from September 2017. The Foundation therefore required additional space in the form of a new teaching block comprising of ten flexible teaching rooms, a sports hall with roof mounted Multi-Use Games Area (MUGA) above and learning resource spaces for social or quiet study.

LSI was appointed by Kier Construction to provide architectural services from RIBA Stage 4B onwards (including a pre-contract Stage 4A due diligence review).

LSI's comprehensive knowledge of working with CLT and working in a 3D environment has brought real value to the scheme, enabling the delivery of an ambitious design, with complicated masonry including brick soffits, stack bonded brickwork, brick slips and vertical herringbone brickwork.

PROJECT AWARDS

RIBA East Awards - Shortlisted

RICS Awards - Community Benefit Award - Shortlisted

Design through Innovation Award - Shortlisted

Education Estates - School Project of the Year - Finalist

RELATED PEOPLE



RUPERT KITCHEN
DIRECTOR



MATT CLARKE
DIRECTOR



ROB RUFFLES
ASSOCIATE



DANIEL OWEN
ARCHITECTURAL TECHNOLOGIST

GRESHAM'S SCHOOL BOARDING HOUSES, NORFOLK



Client: Gresham's School | Value: £1.25M | Date: 2017



Four projects for Gresham's School that comprise permanent extensions to existing boarding house buildings to improve the quality of accommodation and allow for flexibility of use.

The extensions integrate well with the existing buildings, addressing them in a respectful but robust manner. The project provides the school with the facilities to offer school boarders a comfortable and enjoyable environment. The extensions take the form of a simple rectangle in plan. Internal spaces link directly to existing common rooms or hall spaces.

RELATED PEOPLE



RUPERT KITCHEN
DIRECTOR



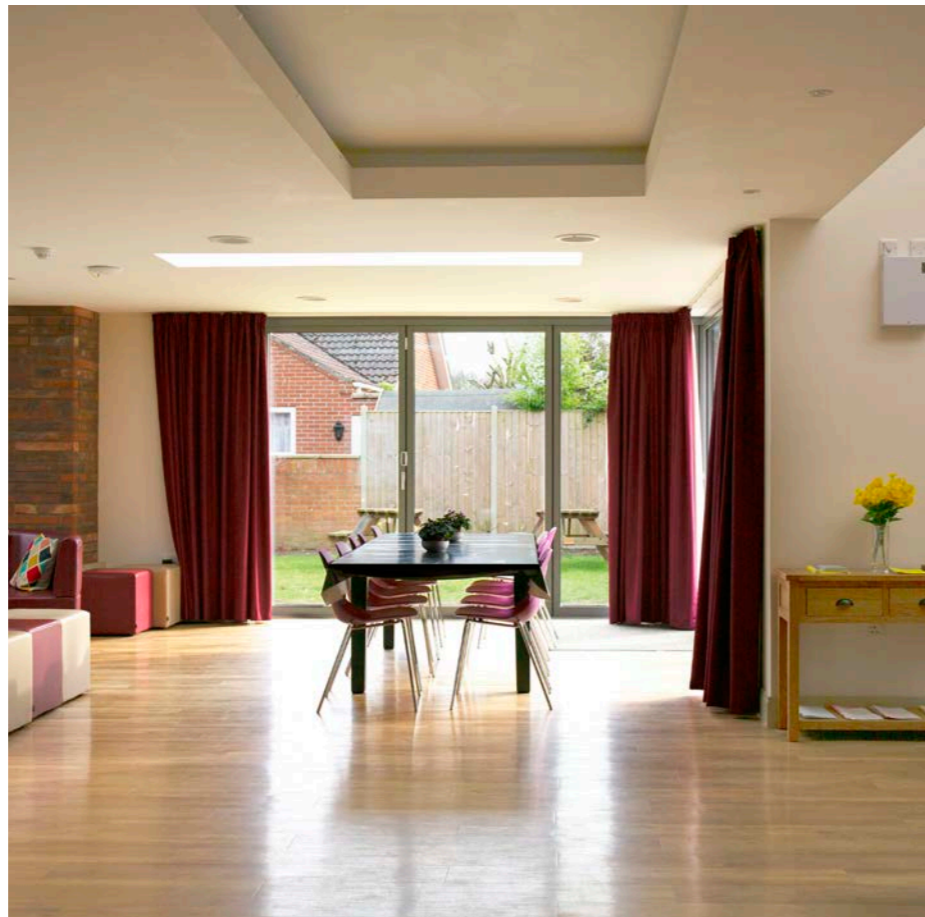
MIRJA MAINWARING
DIRECTOR



DANIEL PEDLEY
ASSOCIATE

GRESHAM'S SCHOOL OAKELEY BOARDING HOUSE

Client: Gresham's School | Value: £2.5M | Date: 2018



The project aimed to provide a new boarding house to replace the existing facilities on the site, which were deemed to be in an unsatisfactory state. Oakeley House's central portion with its multiple gables, roof slopes and chimneys was over 100 years old and has over time fallen in to a state of disrepair. The project aimed to combat this issue by refurbishing facilities that are set to remain, and also to expand and improve in order to create new and innovative spaces for its occupants.

The design of the project ensures that the needs of the user are met while achieving an aesthetic in keeping with the existing school buildings and that reflects the character and history of the original Oakeley buildings.



RELATED PEOPLE



RUPERT KITCHEN
DIRECTOR



DAN PEDLEY
ASSOCIATE



MATT REEVE
ARCHITECT

LANGLEY SCHOOL, LODDON, NORFOLK



Client: Langley School | Value: £3M | Date: 2010



The aim was to reflect the success and gravitas of the School, with new facilities complementing the historic setting, in a manner that would be both respectful and contemporary. The aspiration was to design new buildings that through their clarity, discipline, and harmony with the setting would confer both dignity and delight.

The courtyard form and the ambulatory together reinforce the historic building forms and provide a sequence of external spaces between the facilities, which give a 'collegiate feel'. The integrated sustainable design approach includes 20% on-site renewable energy technologies and high levels of natural ventilation and lighting.

LSI designed the new accommodation as an integral part of a new school development Masterplan. Set within the Listed walled garden, the new two storey building provides a disciplined brick elevation with well-proportioned openings, and a covered 'ambulatory' along the two sides of its L-shaped plan.



RELATED PEOPLE



RUPERT KITCHEN
DIRECTOR



JULIAN STEEL
ASSOCIATE

OUR WORK IN THE EDUCATION SECTOR



Education is one of LSI Architects' core sectors and the practice has a track record of successfully delivering award winning projects throughout the spectrum of the education sector.

Over half of our practice workload is currently on education projects, either at bid stage, from early Stage 0 inception feasibility or from Stages 2 to 4, and onward to completion. The majority of these are implemented through established relationships, invited competitions and Framework agreements and have been delivered through a Design and Build procurement route.

We develop schemes effectively through client engagement meetings to meet with the objectives of local authorities and education bodies, while managing the effective production of deliverables and close monitoring of a scheme development.

All of our DfE work is delivered under a headline project cost that will not be exceeded and hence LSI has experience of working to fixed capital cost, while ensuring design quality and compliance to statutory guidance and the required BIM deliverables and standards.

Due to our active experience in delivering contractor led education projects, which often have site and budget constraints, we have built up a knowledge of affordable supply chains and technical solutions to offer the most efficient, robust and appropriately specified products which are suitable for education facilities.

Projects are developed through technical design coordination stages or through to completion, while managing the effective production of deliverables and close monitoring of the detailed Employer's Requirements.

We have a realistic and practical attitude to projects in combining commercial awareness with technical expertise. Our proactive and diligent approach has earned the respect of many Contractors and Clients. As a result, the majority of our work comes from repeat clients and supply chains.

We have special strengths in terms of team members who are highly skilled and knowledgeable in the effective coordination of structure and building services to create fully integrated 3D models. Our well established processes ensure the effective coordination of the technical design as part of a collaborative and integrated approach.

LSI Architects technical expertise and experience supports our service delivery by the highest standards of competence in technical detailing and co-ordination, including compliance with regulatory standards and best practice.

Our track record in developing new build schools and completing refurbishment and remodelling education projects can be evidenced through the selection of projects that follows.



OUR APPROACH

CLARITY OF PROCESS

A structured design development process is essential to ensure that our service achieves your expectations around quality and effectiveness. LSI Architects operates an integrated management system which is registered to the standards of BS EN ISO 9001:2015 and BS EN ISO14001:2015, including processes that facilitate high quality management of project stages.

This system includes checklists and templates related to each project stage, supported by formal design and technical reviews at key project stages undertaken by our most experienced staff to ensure the quality and effectiveness of our service.

Client approval and sign-off processes involve workstage reports, along with the circulation of project team meeting minutes that capture input from all consultants. Meeting minutes are circulated to an agreed distribution list to keep project stakeholders fully informed. Stage/gateway reports are issued at key project stages, supported by presentations to stakeholders, and standard templates are utilised to manage and monitor project risks.

The project will commence with the preparation of a 'Project Management Plan' (along with a BIM Execution Plan where applicable) which clearly identifies your expectations in terms of quality, cost and timescale. This plan will also capture communications, consultation and sign-off processes and protocols as agreed with the you.

This plan will be maintained and updated throughout the duration of the project, concluding with a 'Final Project Review' to provide feedback you as the client, building managers and users, along with an assessment of each team member's performance.

Subsequent 'Project Reviews' then act as updates in terms of project management, capturing any new requirements, constraints or opportunities.

LSI Architects operates a resource management system (Union Square Workspace) that updates in real time to enable us to manage our workload and capacity both efficiently and effectively. This system would be central to our management of the availability of resource for the project and will ensure the application of suitable skills and experience to deliver the services as set out in the specification.

The project will also be managed with a detailed project and resource plan, including the scheduling of tasks and deliverables at the outset, upon confirmation of the scope. This system is complimented by weekly project reviews, and a weekly meeting between our four studio managers to ensure that all projects are appropriately resourced.

INVESTING IN OUR TEAM

LSI has long been recognised as one of the best employers in the construction industry. We've been a Sunday Times Best Company To Work For since 2015, are gold accredited by Investors In People, and have been a finalist for the AJ100 Employer of the Year Award in 3 of the last 4 years.

In the last 12 months, LSI's employee turnover stood at less than 10%, significantly below the industry average. Clients can expect to have the same highly skilled teams working on projects from beginning to end, and then again on the next project.

As a result, our clients tell us that they value our professional, collaborative, friendly and creative approach to projects and that our team is great to work with.

Our people are happy, highly trained and motivated to deliver the quality design and committed service that we believe our clients should expect. The fact that the majority of our £4m turnover derives from repeat business and framework commissions, is a testament to the quality of our service.

What our clients say about us.:

ENTHUSIASTIC BESPOKE USER-FRIENDLY DOWN-TO-EARTH HARDWORKING EXPERIENCED ENGAGING
WELL MARKETING STATE-OF-THE-ART RESPONSIVE PERSONABLE SUSTAINABLE TRUSTWORTHY
TECHNICAL PRACTICAL ADAPTABLE REGIONAL DETAIL **INNOVATIVE** HELPFUL LISTENING
DILIGENT ACCURATE FUNCTIONAL FRIENDLY AWARD AMENABLE PASSIONATE BRIGHT AMBITIOUS
SOLID THINKERS **ENERGETIC** **PROFESSIONAL** CONSIDERATE VISION FLAIR
PROACTIVE EMBRACING **PROFESSIONAL** GENUINE EASY-GOING FUN
STYLISH FAMILIAR CAPABLE CONNECTED SUCCESSFUL **EXCELLENT** EFFICIENT **COMPETENT** PLANNING QUALITY
TEAMWORK DRIVEN **COLLABORATIVE** RELIABLE CONSCIENTIOUS COMMITTED ATTENTIVE **THOROUGH**
PRAGMATIC TRUSTED WILLING EFFECTIVE DESIGN MEETING DEADLINES **CREATIVE** ENCOURAGING DELIVER
KNOWLEDGEABLE CLIENT-FORWARD MODERN INDEPENDENT **COMMERCIAL** APPROACHABLE



KEY CONTACTS

PETER COURTNEY *BA (Hons) MArch*
DIRECTOR



07779 579970
peter.courtney@lsiarchitects.co.uk

Peter brings over 20 years' experience of working in the education sector, the majority of this in London and the South East Region. Peter has led many large scale new build and refurbishment projects, mainly for ESFA, Local Government and through Private funded education procurement routes.

With strong design, delivery and communication skills, Peter has taken projects varying in size from £500k to £50m from inception through to completion.

RUPERT KITCHEN *BA (Hons), MA (RCA), Dip Arch RIBA*
DIRECTOR



07810 504125
rupert.kitchen@lsiarchitects.co.uk

Rupert has performed the role of Project Director on over 70 projects across the full breadth of the Education sector, completing new build school and refurbishment and remodelling education projects from early planning stages through to delivery and completion.

Rupert also possess specific experience of the design and delivery of a number of University Technical Colleges, including UTC Norfolk which has been praised as the 'benchmark' in the design of technically focused education institutions.

ROB RUFFLES *BA (Hons) BArch (Hons) PGDip (Dist)*
ASSOCIATE



07879 424011
robert.ruffles@lsiarchitects.co.uk

An experienced project runner, Rob has led a large number of education schemes across a variety of stages and through a number of different procurement routes with a particular focus on projects in the education, commercial and residential sectors.

With the ability to develop a design concept and deliver the reality through an understanding of contemporary technical detailing, Rob has a desire to produce work to a very high standard and provide a high level of service both within the design team, and to the clients whose projects he is working on.

ADRIAN MOODY *BA (Hons), Int Grad, Dip RIBA*
ASSOCIATE



07920 088884
adrian.moody@lsiarchitects.co.uk

Adrian has developed a strong reputation within LSI for delivering complex, multi-phased projects from inception to completion.

Much of Adrian's recent work has come in the education sector, particularly on ESFA projects.

Adrian is highly focused and offers a demonstrated ability to successfully balance the coordination of the design team with client requirements and the demands of statutory legislation.

MATTHEW CLARKE *BSc (Hons), BA (Hons)*
DIRECTOR



07876 782205
matthew.clarke@lsiarchitects.co.uk

Matthew is an experienced Architectural Technologist and has spent over 10 years working closely with client teams and collaborating with contractors and other consultants, often on very fast track, demanding programmes. He is an integral part of the design team offering both technical and design input throughout the duration of the project.

The education projects he has contributed to at LSI vary widely in value and complexity. Recent projects include UTCs for Norfolk, Peterborough and Dagenham and the RIBA East award winning Stephen Perse Foundation Senior School. He is currently acting as Project Director on the project to provide new facilities for Norwich School.

DAVID BANNISTER *BA (Hons), MArch, Dip Arch RIBA, BIM Cert.*
ASSOCIATE



07557 909451
david.bannister@lsiarchitects.co.uk

A key member of the LSI education team, David has successfully lead on a range of projects with total contract values of over £50M.

David has extensive experience working on ESFA projects and leads the LSI ESFA working group to promote shared learning and best practice across education projects.

With an underlying emphasis on innovative design solutions and client engagement, David has earned a reputation for delivering large scale projects with demanding briefs, budgets and timescales.

STEVEN COTTON *BSc (Hons), MCIAT*
ASSOCIATE



07818 230646
steven.cotton@lsiarchitects.co.uk

A chartered architectural technologist, Steven has gained experience in a range of sectors but primarily focus on education and commercial projects including significant work from Stage 3 onwards.

Recent projects include the new Blackdale student residences at the University of East Anglia, and the mixed use Ebury Centre in Westminster, comprising a UTC and residential apartments.

Steven takes a collaborative approach to design development within a 3D CAD environment, assisting all stakeholders to have an enhanced understanding of proposals and to optimise the design.

LEANNE ACKRELL *BA (Hons) Arch, Dip. Arch, PP Dip*
ASSOCIATE



07789 761677
leanne.ackrell@lsiarchitects.co.uk

Leanne joined LSI as an Architect in April 2017 having previously worked within the Educator sector at David Morley Architects.

Since joining LSI, Leanne has continued to work mainly in the Education sector, delivering a number of ESFA projects as the project architect and supporting several ESFA bid submission.

Leanne is particularly passionate about the Education sector having developed her skill set in the area throughout her career.

NORWICH

LSI Architects (Design) Ltd, The Old Drill Hall, 23a Cattle Market Street, Norwich NR1 3DY

Tel 01603 660711 **Email** norwich@lsiarchitects.co.uk

Web www.lsiarchitects.co.uk **Twitter** @lsiarchitects **Linkedin** [Isiarchitects](#) **YouTube** [Isiarchitects](#) **Instagram** [Isiarchitects](#)

Registered office The Old Drill Hall, 23a Cattle Market Street, Norwich, NR1 3DY. LSI Architects (Design) Ltd is a limited company registered in England & Wales Reg No. 08842621

LONDON

LSI Architects (Design) Ltd, 2nd Floor, 50-54 Clerkenwell Road, London EC1M 5PS

Tel 020 7278 1739 **Email** london@lsiarchitects.co.uk