



# Design for Learning

Creating Inspirational  
Education Environments

'The 'Oryx' performing arts theatre designed for British School Muscat, Oman



“ *In my 30-year career in education, I have rarely worked with a team who are as creative, responsive and intelligent in the way that they approach the challenges and opportunities that we continue to present them with.* ”

**Kai Vacher**

Principal

British School Muscat

International School of the Year 2019

Sixth form students in the new science wing  
British School Muscat, Oman





## Who We Are

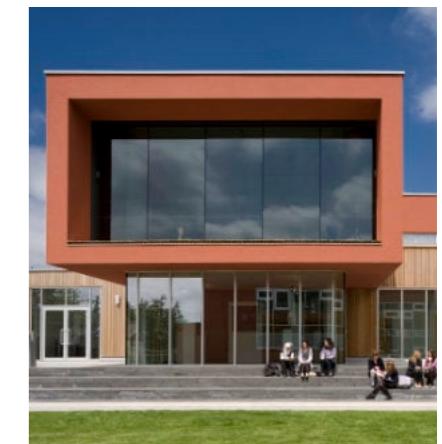
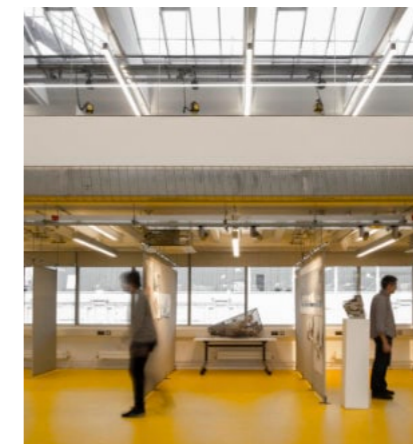
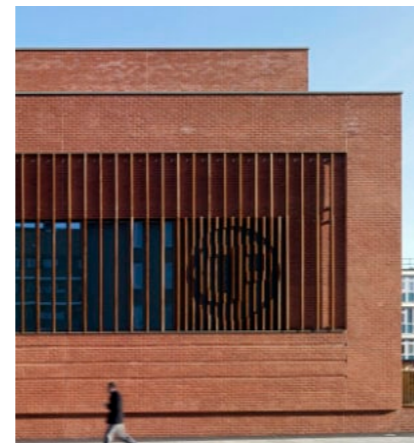
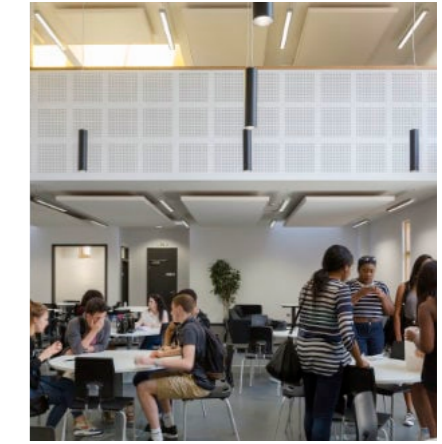
“ *The whole process working with Jestico + Whiles has felt more like a developing friendship rather than client - architect.* ”

**Steve Leahey**  
Principal  
Leigh University  
Technical College

Jestico + Whiles is an award-winning, employee-owned, international architecture and interior design practice based in London and Prague. We work across a wide range of design sectors from hospitality to residential to workplace to science. And we have a particular expertise in education design.

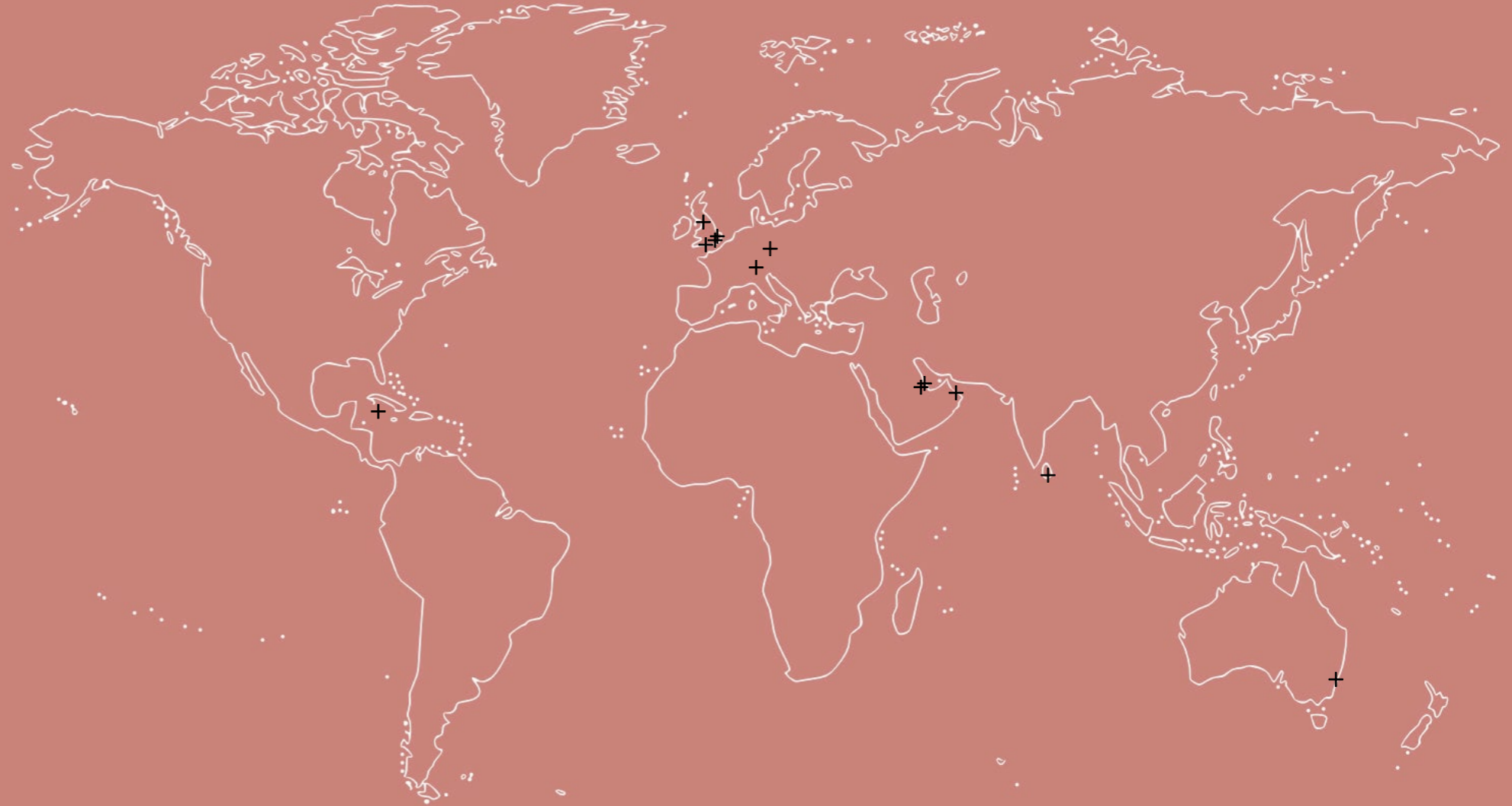
We work with leading education institutions throughout the UK and internationally to create exemplary learning environments for all ages.

We believe passionately in the power of architecture and quality design to improve human well-being, and, most importantly in the case of schools, educational outcomes for young people.



# Working With Leading Educators

It has been our privilege to work with leading educators such as St Paul's Girls' School and Haberdashers' in the UK, Doha College in Qatar, and British School Muscat in Oman; alongside leading universities such as the University of Manchester, the London School of Economics and the University of Cambridge. Our client list also includes important technology companies such as Microsoft.





# Creating Inspirational Learning Environments

“ *The moment I realised how well they knew us, was when we asked staff which their individual preferred option was, and their answer was unanimous. It was quite remarkable for staff at all levels of the school to be in agreement; for me this highlighted just how well Jestico + Whiles had got to know us and what our community wanted.* ”

**Vic Goddard**  
Principal  
Passmores Academy

Inspiring and effective facilities play a vital role in creating a successful school, supporting both teachers and students in maximising their performance and attainment.

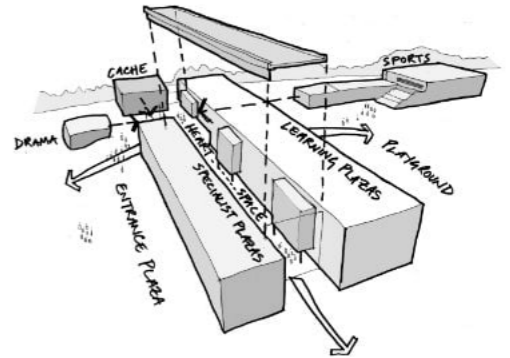
This is where intelligent, inspirational design can make a significant contribution to a school's offer, particularly in an internationally competitive market. Be it designing a whole new school from first principles, strategically rethinking an existing campus, or just focussing on an individual building, we bring exciting ideas and a wealth of experience.

Inspiring facilities do not have to be elaborate or expensive. We always consider what presents best value for the school to maximise the investment made.

We create learning environments that reflect the ethos and vision of your school, whilst being sensitively engaged with the physical, historical, and social context of the site. Enjoyable and inspirational architecture will positively contribute to the social and economic sustainability of your school or campus.

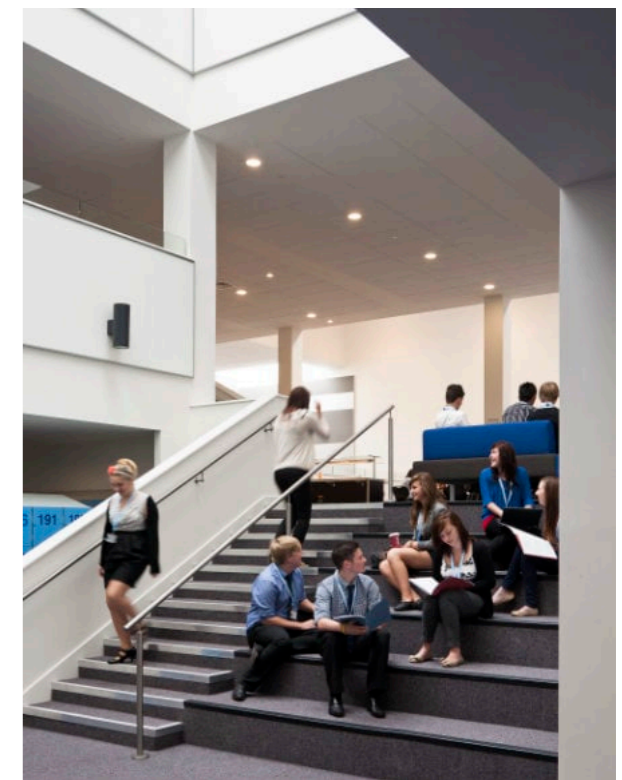


Innovative Learning Plaza at New Line Learning Academy, Kent, UK



Concept sketch for New Line Learning Academy, Kent, UK

Cornwallis Academy, Kent, UK





## How We Work

“

*From the beginning of the project, Jestico + Whiles went to great lengths to understand our vision, before putting pen to paper for the designs. They listened carefully and were most responsive throughout the process and the final design matched our aspiration extremely well.*

**Frank Green CBE**

Former UK Government  
Schools Commissioner

We pride ourselves on our reputation for being very good listeners, who have the skills to creatively respond with outstanding design ideas.

As architects and designers with expertise working in education, we love the process of getting to know each school we are privileged to work with.

We approach all our projects by building relationships to get to know your school and your community, which enables us to design the best possible education environment.

We have expertise in a diverse range of other sectors such as science, workplace, hospitality and residential design. We also have a specialist in-house interior design studio. We bring a broad perspective and cross sector ideas to every project.

We focus on creating innovative learning environments that simply work exceptionally well.



“

*Our new building embraces the tradition of a long established Catholic School through its modern interpretation of a red brick college; a beautiful minimal Chapel forms the centre of our community through its representation of our faith.*

**Alex Parker**  
Business Manager  
Cardinal Pole Catholic School



Concept design options and main entrance approach, Cardinal Pole Catholic School, London, UK

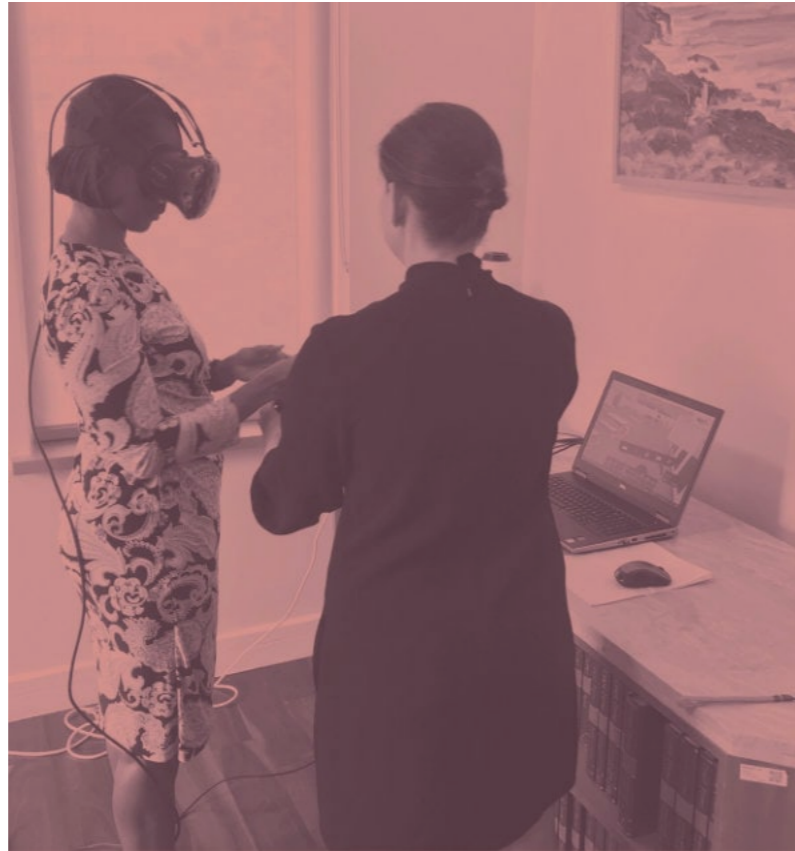




# Working With You

“ *At every stage you have come up with great options and solutions and the latest plans send a shiver down my spine! You have managed to keep all of our requirements as a priority and kept the vision alive. The impact on this school and on the education of this country could be huge.*

**Jonathan Clark**  
Principal  
John Gray High School  
Grand Cayman



focussed group. With others, we have successfully engaged with the entire school community.

We will work flexibly with you utilising a variety of different methods from ‘town hall’ meetings, to interviews, workshops and surveys to precisely capture the project brief and achieve strong stakeholder backing.

We excel at understanding adjacencies and how spaces can be arranged to provide flexible and highly effective teaching environments. Getting the fundamentals right: generous spaces which are well-lit and have good acoustics, comfort and ventilation.

We have designed a wide range of typologies to suit different educational models and the visions of leading educators, from traditional models of departmentally arranged spaces through to open-plan collaborative learning plazas. In each, we bring innovation and creative thinking, but it is always the educators who lead.

Our designs prioritise and enable educational ambition.

Our approach is to design from the inside out, around the needs of teaching and learning. To do this effectively, we build up an understanding of the individual school and its requirements, using a variety of techniques and tools.

A school leadership team or school operator may wish to evolve a design through consultation with a small,

# Refurbishment and Heritage

“

*Jestico + Whiles not only worked effectively with the LSE team to deliver the project on budget but also added value throughout their involvement.*

*One key transformative idea was the Jestico + Whiles foresight to transform low grade, secondary spaces in the semi-basement areas of the lower floors into fully functional and valuable teaching rooms and a dramatic new double height café space.*

**Julian Robinson**

Director of Estates  
London School of Economics

Jestico + Whiles has a long history of working creatively with existing buildings, adapting, and extending them in a contemporary manner to create award-winning buildings that meet modern needs. We are particularly experienced sensitively refurbishing, adapting and extending existing education premises.

It is often said that the most sustainable building is the one that already exists. Adaptive reuse plays an increasingly important role in sustainability as the focus moves to the embodied carbon of construction. We are experts at improving the environmental performance of existing buildings whilst adapting and refurbishing them to meet the needs of the modern curriculum.

Key school refurbishment and extension school projects include the RIBA award-winning Stoke Newington School; the multi-award winning Clapton Girls' Academy; Mossbourne Victoria Park Academy; Haberdashers' Hatcham Temple Grove School; St Paul's Girls' School and the Department of Economics for the London School of Economics.

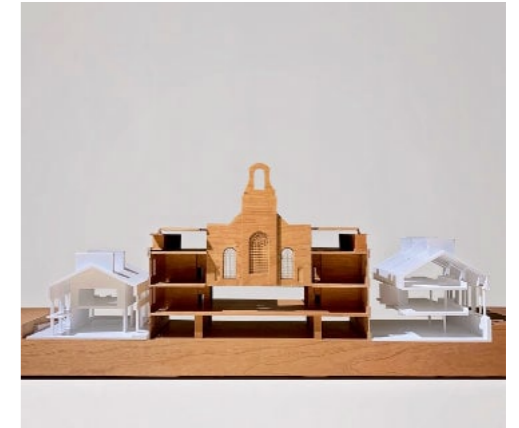




“ *St Paul’s were looking for an architectural team that would listen and respond to the school’s specific needs and not to impose a signature of their own. This masterplan is extensive, holistic and aspirational, addressing multiple challenging needs in a precious listed building. Jestico + Whiles have exceeded our expectations and have been tremendous to work with.*

**Ellis Whitcomb**

Deputy Head & Director for Strategic Development St Paul’s Girls’ School



Sectional model produced for St Paul’s Girls’ School, London, UK

Left and below: The proposed new Centre for Design & Innovation for St Paul’s Girls’ School, London, UK



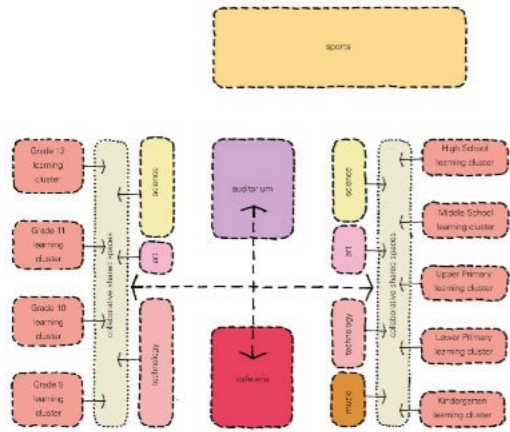
Refurbished library for Clapton Girls' School, London, UK



Refurbished entrance hall for  
LSE at 32 Lincoln's Inn Fields, London, UK

“ *This careful refurbishment and addition of two new buildings creates a teaching environment of immense quality. Here the architects have not been distracted by current design fads but have simply added to the original school in a quiet and understated manner. The result is outstanding.*

Hackney Design Award Judges



Conceptual organisation diagram, main campus entrance visualisation and the completed campus, Doha College, Qatar



# Masterplanning

We are experts in school masterplanning, whether it is transforming an existing site or starting from scratch with a blank canvas in a new location. We can lead the process for you, working together to define your key objectives, establish the project brief and devise a sustainable long-term masterplan aligned to your vision.

We examine the efficiency and effectiveness of the site, comprehensively auditing existing building stock to understand where value resides or where structures may be life-expired. We map the distribution of accommodation,

key spaces and departments to establish a future development strategy which rationalises the school operationally and opens up development opportunities whilst enhancing key aspects of a site's character.

Students, staff and parents must find the campus a compelling place to be, one that is attractive and offers a sense of place and belonging. We promote pedestrian friendly design, with naturally intuitive wayfinding and discretely concealed car parking and servicing areas, allowing the highest quality space to be dedicated for learning.



We have masterplanned education campuses around the world and have worked with a variety of education providers including Doha College, British School Muscat, Qatar Foundation and the International School Prague.

British School Muscat masterplan transformed their existing campus

Qatar Foundation Future School masterplan proposal





Science studio at New Line Learning Academy, Kent, UK

# Science, Technology, Engineering & Mathematics

Our expertise includes designing STEM facilities with the full range of science and technology learning spaces. We are able to draw upon our wider science and technology experience of designing teaching and research laboratories for some of the world's leading universities and innovative technical facilities for global technology companies.

Advanced STEM learning environments enable students to meet their maximum potential and pursue a rewarding career in the science and engineering sector. Modern academic buildings need to accommodate a multitude of uses,

including providing collaboration space, allowing academia to engage with industry and to promote shared learning opportunities and experiences.

The focus in both academia and in industry is on collaboration and project-based learning. These demand highly innovative and flexible spaces. We are currently constructing the 'Centre for Design and Innovation' for St Paul's Girls' School, one of the UK's top performing schools, a new facility aimed at inspiring the next generation of female engineers, inventors and creative entrepreneurs.

The Centre for Design and Innovation for St Paul's Girls' School, London, UK



Qatar Foundation Future School STEM Hub







The Engineering workshop at the Leigh UTC, Kent, UK

“ *The simplicity through open light spaces and functionality make it the perfect college to work in.*

**Steve Leahey**  
Principal  
Leigh University Technical  
College

“ *There are 30 UTCs open around the country. Not all of them have such nice buildings as this. How you have managed to do this for quite a modest sum I don't know. This is really dramatic. It really is a wonderful building. It lifts the spirit.*

**Lord Baker**  
Baker Dearing Trust and former  
UK Secretary of State





Drama studio at Haberdashers' Hatcham College, London, UK

## Performing Arts



Theatre Peckham



Dance studio at the Royal Central School of Speech & Drama

We design a wide variety of different types of learning space to suit various specialist subjects including the performing and applied arts. In our wider work, we have designed professional theatres, cinemas, design studios and art galleries.

Within schools, we have experience designing a wide range of arts facilities; ranging from auditoria, drama and dance studios, music practice suites, television studios, recording and recital spaces; alongside fine art and sculpture studios, exhibition galleries, digital art and immersive media labs.

We also think creatively about how existing spaces can be creatively adapted into new uses. In one example, for the British School Muscat, we converted a redundant sports hall volume into a full production theatre, complete with catwalks, lighting rigs, orchestra and control rooms.

Jestico + Whiles remodelled a gymnasium into a state of the arts venue for British School Muscat, Oman





Competition Swimming Pool at British School Muscat's Aquatics Centre, Oman

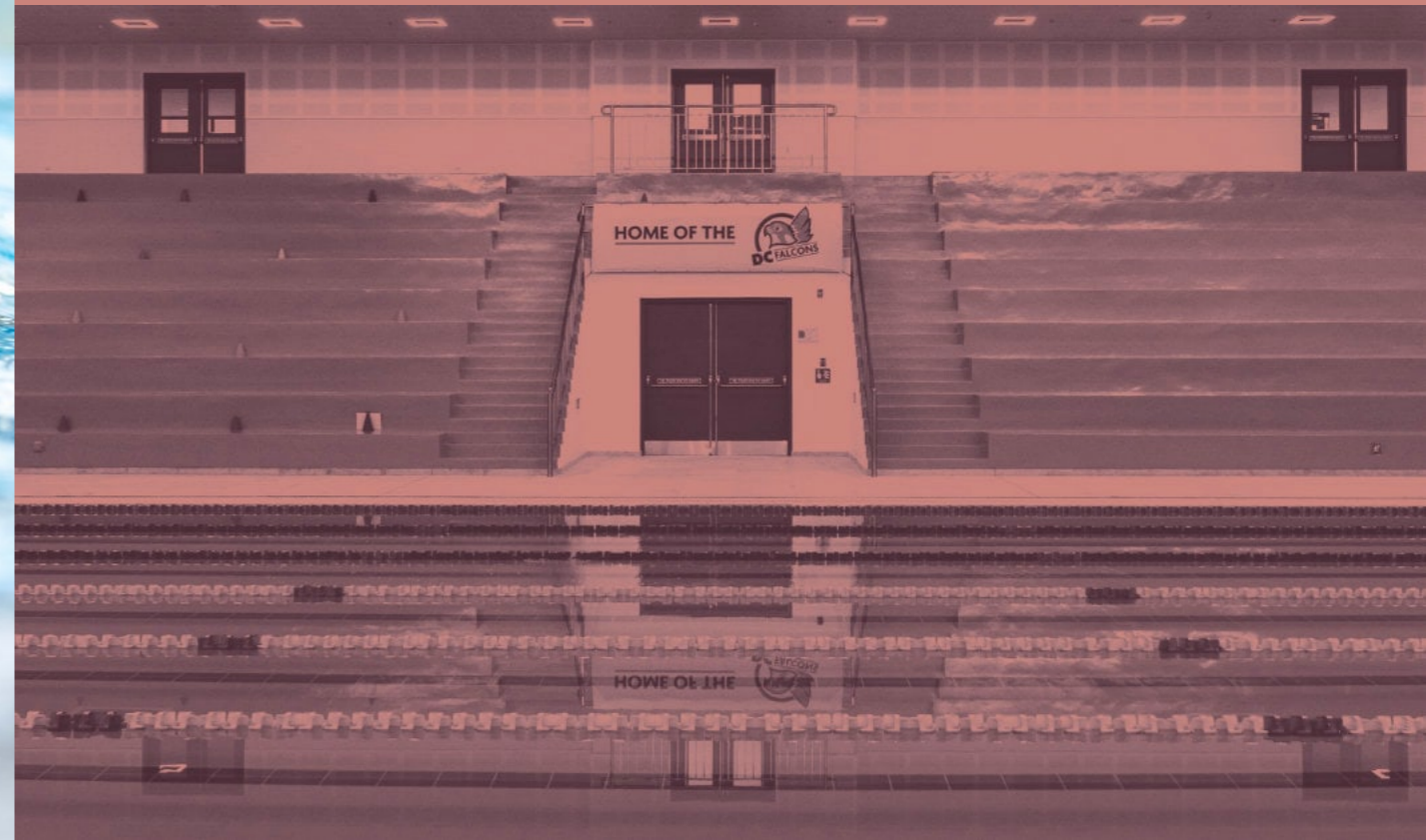
## Sports & Recreation

We design purpose-built sports facilities ranging from competition swimming pools, indoor tennis centres, synthetic sports pitches and indoor gymnasia integrating equipment such as climbing walls, to large scale retractable spectator seating.

The sporting facilities we have created have become valuable assets to our school clients, not only for hosting inter

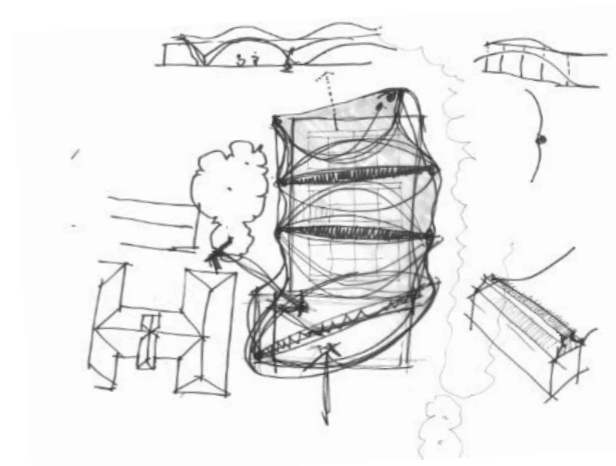
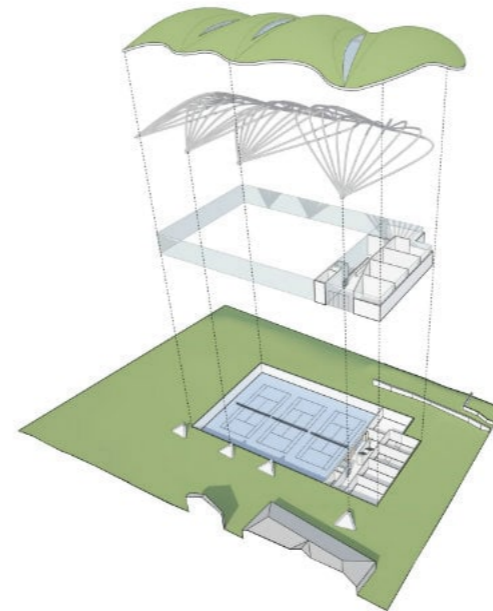
school competitions, but central to their surrounding communities, bringing additional means of revenue generation.

We will listen to your aspirations and can advise you on potential sports and recreation opportunities available to your school ensuring that proposals can meet national or international standards for competition where required.





Gymnasium at Passmores Academy, Essex, UK



Proposed indoor tennis centre for Cothill House School, Oxfordshire, UK





## Design For All Ages

As education architects we embrace lifelong learning; every generation has the potential to further develop their knowledge and skills.

We offer expertise in every area of education design from nursery schools and kindergarten through to universities and beyond into the workplace.

We have designed nursery and pre-school accommodation integrated into larger school developments where they nurture and prepare young children for the step-up into the main school alongside independent kindergarten.

Left: Proposal for Černošice Kindergarten, Czech Republic

Below: Stoke Newington School Sixth Form building and courtyard, London, UK





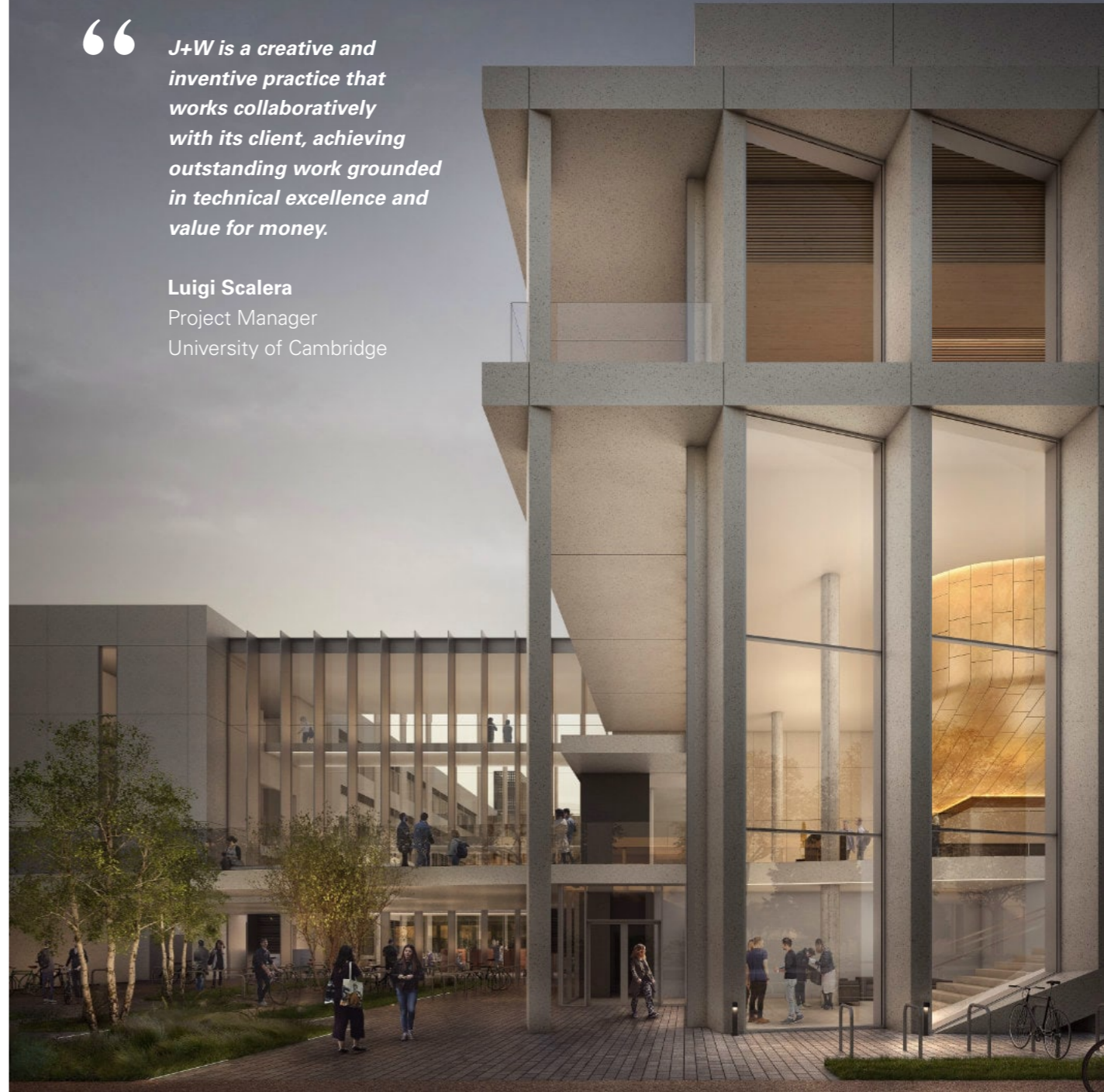
Above: Study and cafe space created within the lower ground floor of 32 Lincoln's Inn Fields, London School of Economics, London, UK

Right: Ray Dolby Centre, Cavendish Laboratory, University of Cambridge, UK

“

*J+W is a creative and inventive practice that works collaboratively with its client, achieving outstanding work grounded in technical excellence and value for money.*

**Luigi Scalera**  
Project Manager  
University of Cambridge





Clapton Girls' School multi-purpose hall extension, featuring passive ventilation and maximising natural daylight

# Sustainable Design

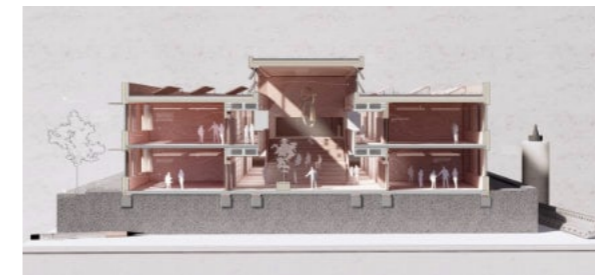
With the built environment contributing approximately 39% of global greenhouse gas emissions, a step change in design, including schools, is essential to meeting climate objectives.

Jestico + Whiles has a long pedigree in designing sustainable architecture. We pursue designs that minimise environmental impact and reduce lifecycle cost.

We create adaptable school buildings that offer agility for future curriculum change.

We have in-house certified Passivhaus Designers. We understand LEED, BREEAM, WELL and other sustainability assessment tools and seek to seamlessly integrate passive and active energy strategies into our projects.

Net Zero Carbon School Prototype



Collaborating with enlightened engineering consultants, we develop a sustainability strategy at the inception of a project to ensure all local codes, building standards and lifecycle costs are considered as an inherent part of design development. Essential principles of building orientation, massing and glazing design have a major impact on internal comfort and operational energy consumption.

Our goal is to deliver healthy, environmentally responsible buildings that reduce our reliance on the earth's natural resources.

Our in-house research unit, Addition Labs, has developed a prototype Net Zero Carbon school with operational and embodied carbon levels below those envisaged by the London Energy Transformation Initiative (LETI), who have been leading the way on how the built environment sector needs to respond to the climate challenge.



$$\nabla^2 E + \nabla \left( \frac{1}{n^2} \nabla_n^2 E \right)$$
$$\nabla \times E = -\mu_0 \frac{\partial H}{\partial t}$$
$$\nabla \times H = \epsilon \frac{\partial E}{\partial t} = \epsilon_0 n^2 \frac{\partial E}{\partial t}$$
$$\nabla \times (\nabla \times H) = \nabla \times \left( \epsilon_0 n^2 \frac{\partial E}{\partial t} \right)$$
$$\nabla \times (\nabla \times H) = -\nabla^2 H$$
$$\nabla^2 H = \mu_0 \epsilon_0 n^2 \frac{\partial^2 E}{\partial t^2}$$
$$\nabla^2 E = \mu_0 \epsilon_0 n^2 \frac{\partial^2 E}{\partial t^2}$$
$$\nabla D = \rho$$





Jestico + Whiles outreach schools event collaboration

## Connecting With Us

Jestico + Whiles was established in 1979 as a design-led studio and has remained true to its core values of humanity and sustainability as we have grown to become a thriving 80-strong international practice today.

We have a dedicated education team of highly talented architects and interior designers who draw on cross-sector experience to bring a richness to our work.

As the first architectural practice to form an employee ownership trust, we are at the forefront of working practice innovation and employee well-being.

We aim to make the process of architecture and design a fun one; a view consistently endorsed by our clients.

We would be delighted to discuss any potential project requirements you may have, whatever stage you are at. Or if you would just like to find out more about us, please do get in touch.



### jestico + whiles

Sutton Yard 65 Goswell Road  
London EC1V 7EN

+44 (0) 20 7380 0382

jesticowhiles.com

architecture + interior design

london + prague

#### email

info@jesticowhiles.com

